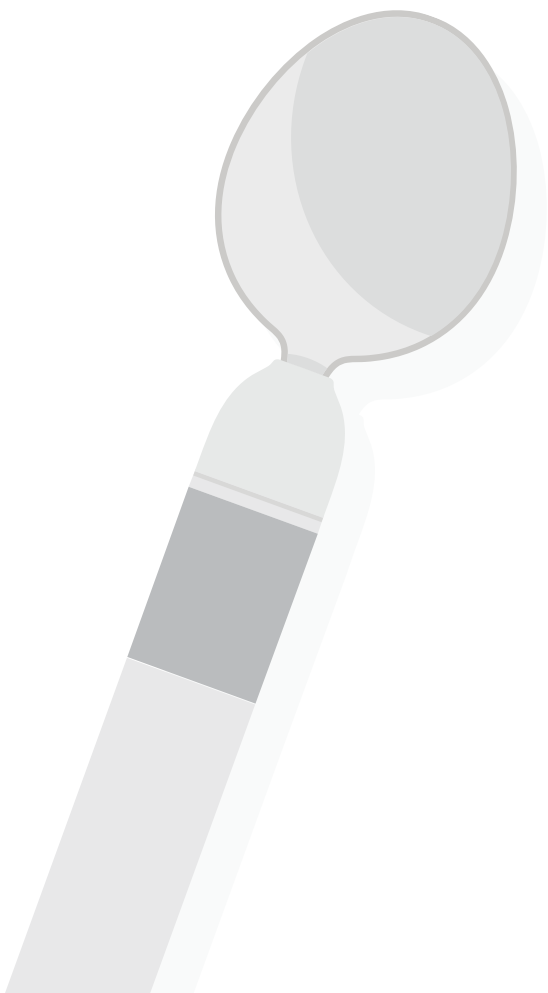
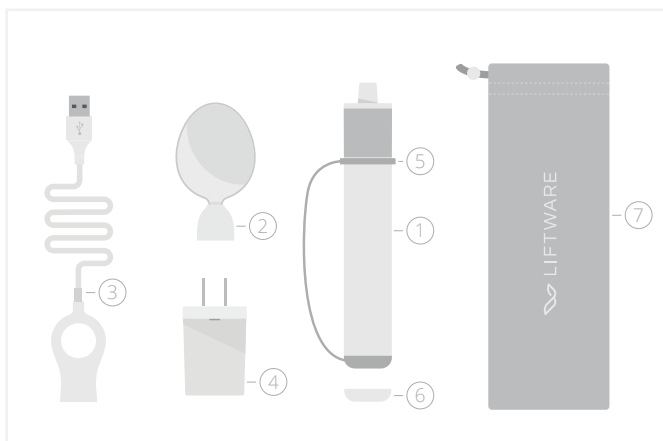




Liftware Level Starter Kit
Product Handbook



What's inside



The Liftware Level Starter Kit includes:

1. A leveling handle
2. A soup spoon attachment
3. USB connector cable
4. USB wall adapter
5. Removable handle strap
6. End cap (see page 7 for more information)
7. Storage pouch

Note: additional attachments, including the fork and soup spoon, are available separately.

Important safeguards

 Read all instructions before using.

When using electrical products, especially when children are present, basic safety precautions should always be followed including the following:

DANGER—TO REDUCE THE RISK OF ELECTROCUTION:

- Do not wash the Liftware leveling handle in dishwasher.
- Do not use while bathing.
- Do not place or store product where it can fall or be pulled into a tub or a sink.
- Do not place in or drop into water or other liquid.
- Do not reach for a product that has fallen into water. Unplug immediately.

WARNING—TO REDUCE THE RISK OF BURNS, ELECTROCUTION, FIRE OR INJURY TO PERSONS:

- Close supervision is necessary when the product is used by, on, or near children or people who are cognitively impaired.
- Use this product only for its intended use as described in this manual. Do not use attachments not recommended by the manufacturer.
- Never operate this product if it has a damaged cord or plug, if it is not working properly, if it has been dropped or damaged, or dropped into water. Return the product to a service center for examination and repair.
- Do not put any parts of the Liftware Level Starter Kit in or near any heating source or cooking device, such as microwave ovens.
- Never use while sleeping or drowsy. Do not use while outdoors or operate where aerosol (spray) products are being used or where oxygen is being administered.

- The Liftware leveling handle includes small parts and parts with magnets that can be easily removed and, once removed, may pose a choking or ingestion hazard. Children should be supervised when using Liftware Level.

Liftware Level is not to be used by children or persons with reduced physical, sensory, or mental capabilities, or lack of experience and knowledge, unless they have been given supervision or instruction. Children should be supervised to not play with Liftware Level.

The Liftware leveling handle and attachments contain small magnets similar in strength to ordinary household magnets. If you have a cardiac pacemaker or other implantable medical electronic device, follow your device's directions for use regarding magnets. The standard recommendation is to keep your implantable device at least 6 inches from Liftware because it contains small magnets. If you have concerns about your implantable device, consult your healthcare provider.

SAVE THESE INSTRUCTIONS

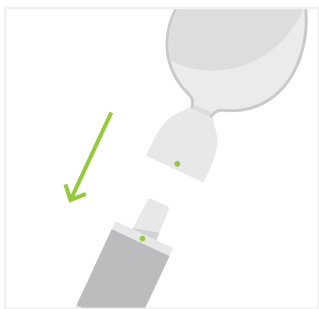
INDICATIONS FOR USE: Liftware Level is a daily activity assist device consisting of a handle and a selection of attachments (e.g. soup spoon, fork) designed to help people with limited hand and arm mobility in their activities of daily living. Conditions that may contribute to such difficulties include cerebral palsy, spinal cord injury, Huntington's disease and post-stroke deficits.

CONTRAINDICATIONS: None known.

WARNINGS AND PRECAUTIONS: See opposite page for IMPORTANT SAFEGUARDS.

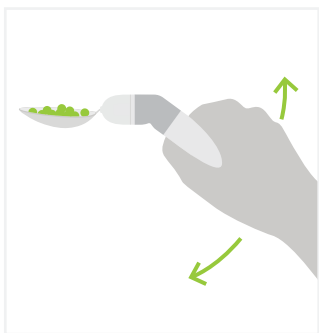
Use your Liftware Level

Clean the leveling handle and utensil attachments according to the instructions on page 9 of this handbook.



Connect the attachment to the handle using the gray dots for correct alignment. It will snap in place using magnets.

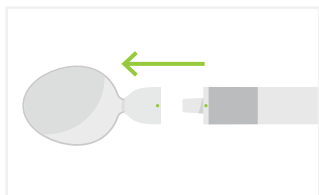
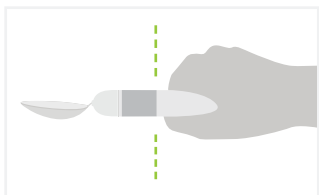
The handle will turn on automatically.



The leveling handle will keep the soup spoon or other attachment level.

If it detects that you're trying to scoop food into the spoon, Level will angle the utensil downward for ease of use.

Keep your fingers clear of the flexible gray joint where the handle connects to the attachment. It will bend and rotate by itself, so avoid manually bending it.



When you finish your meal, remove the attachment to turn the handle off and conserve battery power.

Using the strap

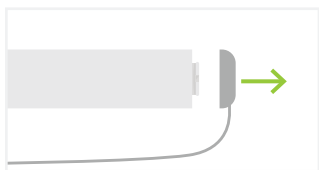


Level comes with a handle strap you may choose to use to keep the device secure in your hand.

Adjust the strap to fit your hand, then slide your hand in.

Removing the strap

If you prefer not to use the strap, follow these instructions:



Pull the bottom of the strap off the end of the handle.



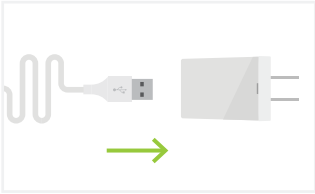
Slide the strap down the length of the handle.



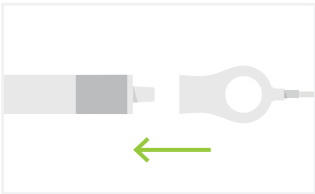
Screw the end cap to the bottom of the handle. (The end cap is included in a small envelope inside the Starter Kit box.)

Charging

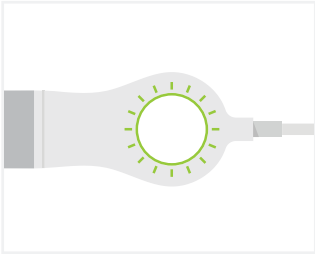
Remove the attachment from the Liftware leveling handle before you charge. To charge the Liftware leveling handle:



Plug the USB connector end of the charging connector into the USB wall adapter.



Plug the leveling handle into the ring-shaped end of the charging connector with the magnets.



A light inside the ring portion of the charging connector will blink while the leveling handle is charging, and glow solid when the leveling handle is fully charged.

To fully charge the handle, leave it plugged in overnight or until the light on the charging connector glows solid white.

Level is designed to last for at least one hour of continuous use (approximately 3 meals) on a single charge.

To prolong battery life, remove the attachment when not using the leveling handle.

Cleaning

HANDLE

Wipe the handle clean with a damp sponge or antibacterial wipes. To prevent damage, don't submerge the handle in water or clean it in the dishwasher.

FLEXIBLE GRAY JOINT

Use a soft sponge to wipe the gray joint in the handle with warm water and mild detergent. Never clean this area with toothpicks, tweezers, or anything sharp.

ATTACHMENTS

The soup spoon or other eating utensil attachments can be washed in the dishwasher or cleaned by hand with a sponge, mild detergent, and warm water.

Storage

Store the Liftware leveling handle in a cool, dry place with the attachment disconnected from the handle. Store the handle out of direct sunlight.

Disposal

Liftware Level is powered by a rechargeable lithium ion polymer battery that should not be disposed of in a landfill. Dispose according to local laws and regulations.

Please note that the battery should only be removed at the end of the product's life. Removing the battery will destroy Liftware Level and void the product warranty.

Returns & limited warranty

For U.S. based customers: To view our full return policy and the Liftware Limited Warranty, please visit www.liftware.com/policies. To make a return or if you need more information, contact support@liftware.com or (415) 894-5438.

License

Liftware uses open-source software under the following license:

Portions of avr-libc are Copyright (c) 1999-2010

Keith Gudger, Bjoern Haase, Steinar Haugen, Peter Jansen, Reinhard Jessich, Magnus Johansson, Artur Lipowski, Marek Michalkiewicz, Colin O'Flynn, Bob Paddock, Reiner Patommel, Michael Rickman, Theodore A. Roth, Juergen Schilling, Philip Soeberg, Anatoly Sokolov, Nils Kristian Strom, Michael Stumpf, Stefan Swanepoel, Eric B. Weddington, Joerg Wunsch, Dmitry Xmelkov, The Regents of the University of California. All rights reserved.

Redistribution and use in source and binary forms, with or without modification, are permitted provided that the following conditions are met:

- Redistributions of source code must retain the above copyright notice, this list of conditions and the following disclaimer.*
- Redistributions in binary form must reproduce the above copyright notice, this list of conditions and the following disclaimer in the documentation and/or other materials provided with the distribution.*
- Neither the name of the copyright holders nor the names of contributors may be used to endorse or promote products derived from this software without specific prior written permission.*

THIS SOFTWARE IS PROVIDED BY THE COPYRIGHT HOLDERS AND CONTRIBUTORS "AS IS" AND ANY EXPRESS OR IMPLIED WARRANTIES, INCLUDING, BUT NOT LIMITED TO, THE IMPLIED WARRANTIES OF MERCHANTABILITY AND FITNESS FOR A PARTICULAR PURPOSE ARE DISCLAIMED. IN NO EVENT SHALL THE COPYRIGHT OWNER OR CONTRIBUTORS BE LIABLE FOR ANY DIRECT, INDIRECT, INCIDENTAL, SPECIAL, EXEMPLARY, OR CONSEQUENTIAL DAMAGES (INCLUDING, BUT NOT LIMITED TO, PROCUREMENT OF SUBSTITUTE GOODS OR SERVICES; LOSS OF USE, DATA, OR PROFITS; OR BUSINESS INTERRUPTION) HOWEVER CAUSED AND ON ANY THEORY OF LIABILITY, WHETHER IN CONTRACT, STRICT LIABILITY, OR TORT (INCLUDING NEGLIGENCE OR OTHERWISE) ARISING IN ANY WAY OUT OF THE USE OF THIS SOFTWARE, EVEN IF ADVISED OF THE POSSIBILITY OF SUCH DAMAGE.

Additional information

Liftware is designed by Lift Labs (of Verily Life Sciences LLC) in South San Francisco, California.

Made in China.

This device complies with Part 15 of the FCC Rules. Operation is subject to the following two conditions:

- This device may not cause harmful interference.
- This device must accept any interference received, including interference that may cause undesired operation.

This equipment has been tested and found to comply with the limits for a Class B digital device, pursuant to part 15 of the FCC Rules. These limits are designed to provide reasonable protection against harmful interference in a residential installation. This equipment generates, uses and can emit radio frequency energy and, if not installed and used in accordance with the instructions, may cause interference to radio communications. However, there is no guarantee that interference will not occur in a particular installation. If this equipment does cause harmful interference to radio or television reception, which can be determined by turning the equipment off and on, the user is encouraged to try to correct the interference by one or more of the following measures:

- Reorient or relocate the receiving antenna.
- Increase the separation between the equipment and received.
- Connect the equipment into an outlet different from that to which the receiver is connected.
- Consult the dealer or an experienced radio/TV technician for help.

Caution—Changes or modifications not expressly approved by Verily Life Sciences LLC could void the user's authority to operate the equipment.

For U.S. based customers: The latest version of the user guide can be accessed at www.liftware.com/level/faqs.

SYMBOLS GLOSSARY

The following symbols appear on the Liftware Level handle and charging connector, and are defined below:



Read important safeguards on pages 4 and 5 of this user guide before using Liftware Level.



Read all instructions before using Liftware Level.

Liftware Level Model 1.0



Meets California Energy
Commission requirements for
battery charger systems



Manufactured by:
Lift Labs of Verily Life Sciences LLC
269 E Grand Ave
S San Francisco, CA 94080 USA

© 2017 Lift Labs of Verily Life Sciences LLC. All rights reserved.
Liftware and related logos are trademarks of Verily Life Sciences LLC

953-00649-01 Rev A