



## The Red Badge of Courage

Unpack the Red Badge of Courage and the American Civil War using Discovery Education *unitedstreaming* & Google Earth

### Social Studies

#### Middle School Language Arts Lesson Plan

In this unit, students will explore the Southern and Northern lands, battle fields, and troop movements for the American Civil War, to add context to the literary book, The Red Badge of Courage.

#### Standards:

- The student will explain the effectiveness of stylistic elements in a text that communicate an author's purpose.
- The student will explain how common and universal experiences serve as the source of literary themes that cross time and cultures.

#### Learning Objectives: The student will be able to,

- demonstrate their understanding of the text on four levels: factual, interpretive, critical and personal.
- discuss conflicts within themselves that are a natural part growing up.

#### Technology components:

- Discovery Education *unitedstreaming* account (<http://www.unitedstreaming.com>\*)
- Google Earth software (free download from <http://earth.google.com>)
- Computer with LCD projector and Internet connection
- Access to the Internet for teacher and student-based research
- Presentation software such as PowerPoint
- Graphic Organizing software such as Inspiration and TimeLiner 5.0

#### Introduction:

- Pose a question to the students, "What do you know about war?" Record answers using Inspiration or on the board.
- Show the video segment, Introduction: "The Red Badge of Courage" and the Realities of War from The Red Badge of Courage, available on Discovery Education *unitedstreaming*.



- Tell students they will be reading *The Red Badge of Courage* and looking at the impact of war on soldiers, discussing fear and courage.

### **Prior Knowledge:**

- Using Inspiration, continue brainstorming what students know about the Civil War, how it began, who was involved, and the final outcome.

### **Present New Content:**

- Teacher uses Google Earth to present America in the 1800's, different states that fought during the Civil war and some of the main reasons behind the succession. Digital content from *unitedstreaming* help provide context to Civil War era Southern and Northern States.
  - Suggested *unitedstreaming* content from *The American Civil War*.
    - War Strategy for the North
    - War Strategy for the South
    - The Northern Home Front
    - The Southern Home Front
  -
- Students read assigned chapters of *Red Badge of Courage*. Through out the discussions of the book, interject questions about how Henry Fleming evolves as a person and as a soldier.
  - Suggested *unitedstreaming* content from:
    - A Soldier's Doubt: Do I Have What It Takes to Fight?
    - The Ambiguity of the Real Henry Fleming: Farm Boy or Hero?
- Students will create an ongoing journal can use Google Earth 'pushpins' to map major battles and locations of events from the book.

### **Independent Learning Experience:**

- After completing the book, students review the Google Earth pushpins then use TimeLiner to create a timeline of major events.
- Research events and the impact of the war. Create a multimedia article comparing and contrasting the author's portrayal of Henry Fleming's pre-war expectations at home to his experiences on the battle field.
- Working in groups, students will plan an itinerary and memorial trip for the *Red Badge of Courage* book tour with a paragraph/discussion on the purpose for visiting each site and its significance / connections to the novel.





#### Additional research websites:

- One of the functions of the National Park Service is to maintain historic battlefield sites around the country. (<http://www.nps.gov/parks.html>)
- The Civil War site brings together information, timelines, and images about the Civil War. (<http://www.civilwar.com>)
- Students can also search for primary source information through a Google Search using the following keywords: “American Civil War”\*

\* Review the Google Search tutorial in the Professional Development section of *unitedstreaming*.

#### Cross-Curricular Lesson Extension:

- Present the students with several *unitedstreaming* images from the Civil War. Have the students study the image then imagine they were one of the people. Students can write a letter home in 1<sup>st</sup> person as if they were that soldier discussing their colleagues, life in camp, or other hardships from the war.

#### Feedback:

- Teacher circulates around the room providing ongoing feedback to individual students and small groups.
- Students should submit a rough draft of their tour with key ideas behind each location half way through the project. Teacher will provide comments and guidance on next steps for each pair or group.

#### Assessment:

- Use a scoring rubric, provided to the students in advance, to evaluate each tour itinerary, rational and multimedia presentation.

#### Transfer:

- Students today are also confronted with questions of self-doubt and courage. Have students discuss and write about courage in standing up to peer pressure.

#### Citations:

Great Books: The Red Badge of Courage. Discovery Channel School (1999).

American Civil War, The: The War Years: Part 1: 1861-1862 and Part 2: 1863-1865. United Learning, 1996.

Image: War hospital. Library of Congress (2006).

Image: African-American infantry band. Library of Congress (2006).

Image: Union gun crew in Virginia. Library of Congress (2006).





Image: Doctor Letterman and staff, USA. Library of Congress (2006).





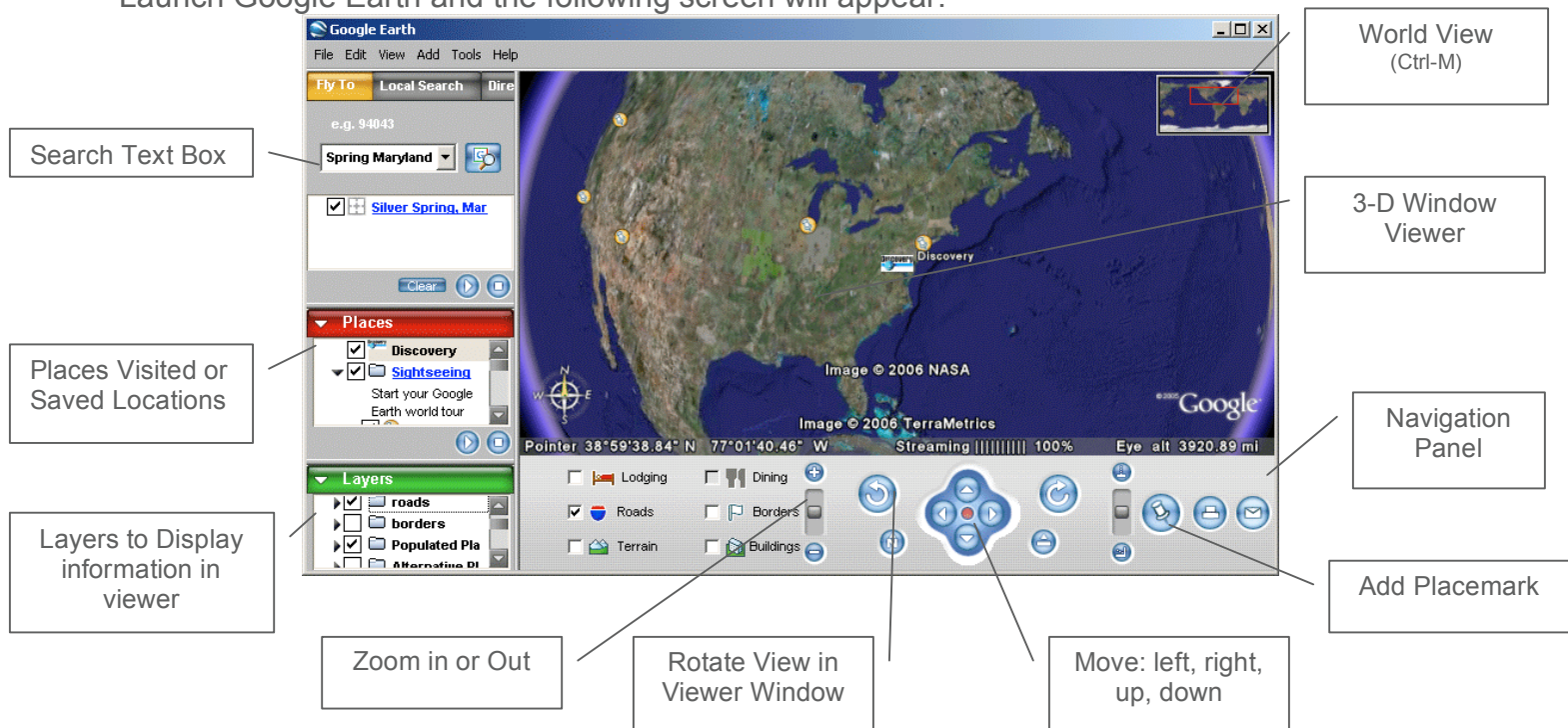
# Discovery Education *unitedstreaming*

## Google Earth

Google Earth allows educators to add elements of satellite photography, world geography, locations, and images to their instructional lessons.

### Google Earth Viewer

Launch Google Earth and the following screen will appear:



### Fly To a Location

To have Google Earth 'fly-by' a location, type the city, state, or country into the Search Text Box. Google Earth will locate the position and the viewer window will 'fly' to the location.

- Click and hold in the viewer window to move around the location
- Use Google Earth's Zoom, Rotate, and Move tools from the menu bar to navigate and explore the location

### World View

Press Ctrl-M to open the world view map in the top right hand corner of the Viewer Window.


- Double-click on any location in the World Viewer to jump to that location
- Use Google Earth's Zoom, Rotate, and Move tools from the menu bar to navigate and explore the location

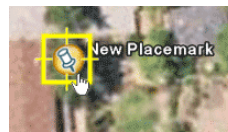






### Making a Placemark:

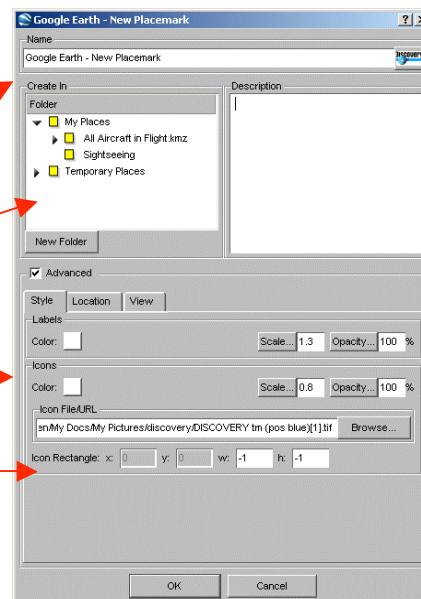
1. Position the viewer in the location where you want to add a Placemark.
2. Click on the 'Add Placemark' pushpin icon  in the navigation panel.
3. The New Placemark dialog appears and a New Placemark icon is centered in the viewer inside a flashing yellow square.



- Position the Placemark by clicking and holding and moving to the exact location you want it.

- In the New Placemark dialogue box, edit the following properties:


- Name for the Placemark
- Destination folder, existing folder or create a new one
- Color of Label or Placemark icon
- Image to represent the Placemark



4. Select a folder to hold the Placemark or create a new one.
5. Click the OK button to apply the information you entered.
6. Once created, editing can be completed by 'right' clicking on the Placemark icon and selecting 'edit...'



### Inserting a *unitedstreaming* video segment inside a Placemark:

1. Log into *unitedstreaming* and search or browse the video segment.
2. Right click on the download icon  and select 'copy shortcut'
3. Open up the Placemark by right-clicking on it and click EDIT
4. Paste Shortcut Location inside the Description text box.  
Anything that is put inside this box will appear when the Placemark is opened.
5. When visiting the Placemark, double click on the image/icon to open and view images or video segments.

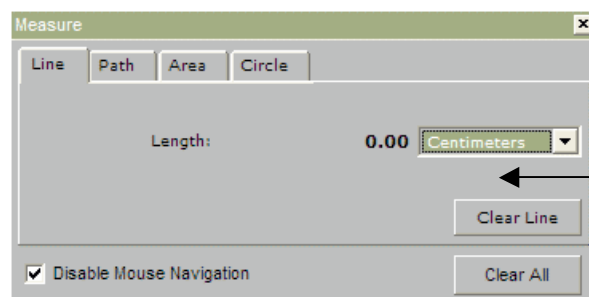
### Inserting Funk and Wagnall articles inside a Placemark:

You can copy and paste any of the Funk and Wagnall text found inside *unitedstreaming* that accompanies many of the videos into the Description text box.

### Measuring

Use the Measure window in the Tools menu to measure length, area, and circumference as follows:

1. Position the imagery you want to measure within the 3D viewer and make sure you are viewing the earth from top-down (type U) and with terrain turned off for best accuracy.
2. From the Tools menu, select Measure. The Measure dialog box appears.



Consider moving the dialog box to a region of your screen that doesn't obstruct the 3D viewer.

3. Choose the type of shape you want to use to measure:
  - Line allows you to measure from point to point
  - Path allows you to create multiple stops on a journey or trip to measure the total distance

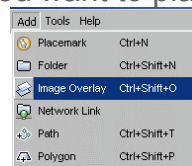


4. Choose the unit of measure for length; perimeter, area, radius, or circumference, as applicable.
5. Click in the 3D viewer to set the beginning point for your shape:
  - For a line: click on the beginning point and the ending point, the distance will appear in the Measure dialogue box.
  - For a Path: click once for the beginning point, indicated by a red dot, click along points of your path and a yellow line connects each point as you move the mouse. Each additional click adds a new line to the path. The total units for the shape are defined in the Measure dialog.
6. Click 'Clear' to reset the measure tool. To close, click on the 'x' on the top right corner of the dialogue box.

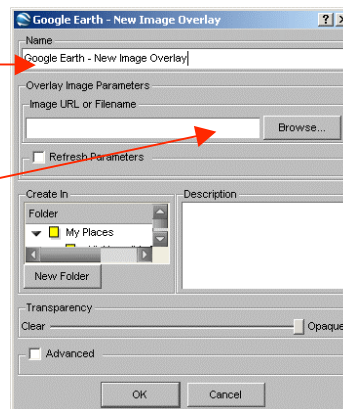
### Creating an Image Overlay

An image overlay is a picture that you can add over the Google Earth satellite view.

1. Position the viewer in the location where you want to place the overlay image file.
2. Select Image Overlay from the Add menu.
3. The New Image Overlay dialog appears. Edit the following properties:



- Provide a descriptive name in the Name field.
- Browse to locate the icon or image on your computer
- At this point, the image appears in the 3D viewer, with green anchor points. Click and drag these points to position the image.



4. Position the image in the viewer to your preferences and click OK to complete the creation.