

ComSkip 1.3 for SageTV 4.x

10 Steps to Install and Use

Step 1 – Most Important Step

Just in case ... [DON'T FORGET TO ALWAYS BACK UP YOUR SAGE DIRECTORIES!](#)

Step 2 - Download "ShowAnalyzer Beta 0.5.10" from the Dragon Global web site

<http://www.dragonglobal.org/showanalyzer.htm>

<http://www.dragonglobal.org/download/ShowAnalyzerSetupBeta.0.5.10.exe>

Make sure to request a Trial Key!

<http://www.dragonglobal.org/trialrequest.htm>

Step 3 - Download "DirMon 0.2.5" from the Dragon Global web site

<http://www.dragonglobal.org/dirmon.htm>

<http://www.dragonglobal.org/download/DirMonSetup.0.2.5.exe>

Step 4 - Download "ComSkip v1.3 Import 10-18-05" from the SageTV Forum

<http://forums.sage.tv/forums/showthread.php?p=107290#post107290>

<http://forums.sage.tv/forums/showthread.php?p=119293#post119293>

Use the "Update 18/10/2005" described as Malore Fixed it for V.3.0.13 ... It is compatible with SageTV Version 4.x.

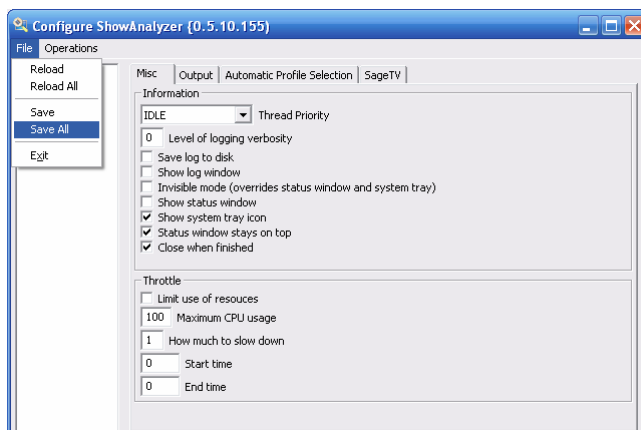
<http://forums.sage.tv/forums/attachment.php?attachmentid=2661&d=1129686372>

Step 5 - Install "ShowAnalyzer" by launching the "ShowAnalyzerSetupBeta.0.5.10.exe" Setup file downloaded

Do not change any **ShowAnalyzer Settings**, however to **create necessary settings files**, you must;

- Launch "**Configure ShowAnalyzer**"
- Click the "**File**" menu
- Select "**Save All**"

(See screen shot below)



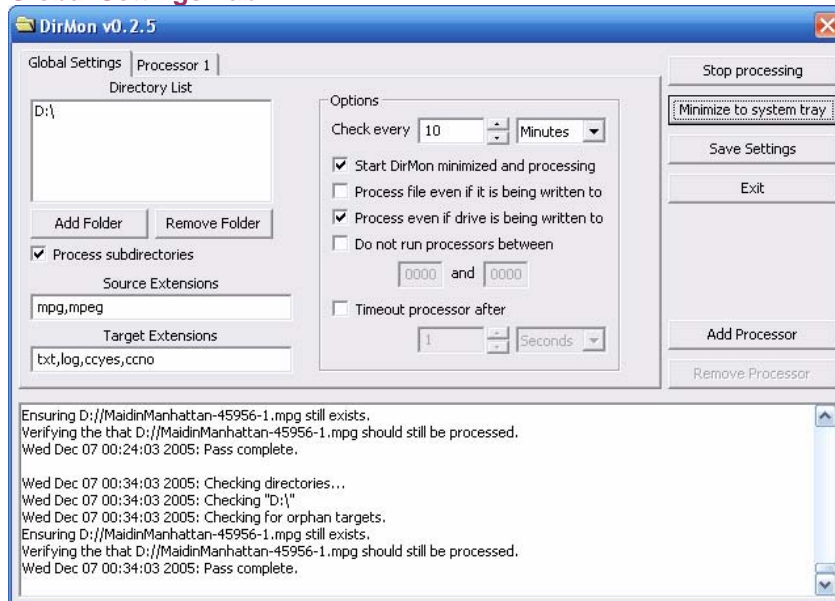
Step 6 - Install "DirMon" by launching the "DirMonSetup.0.2.5.exe" Setup file downloaded

In order to Configure **DirMon Settings**, you must;

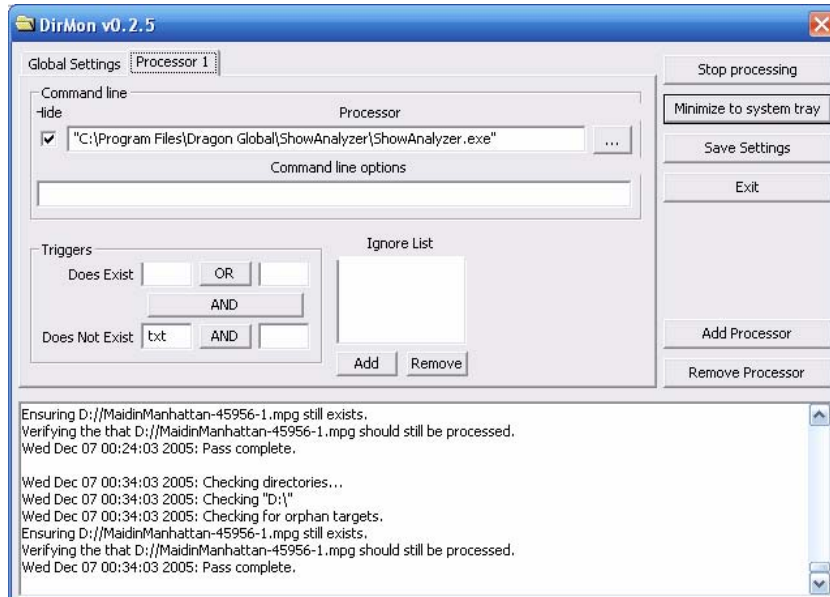
- Launch "**DirMon**"
- Click "**Add Folder**" in the **Global Settings Tab** and add all the locations of your SageTV Recordings
- Click "**Add Processor**" to create a **Processor 1 Tab**
- Click the "**...**" **Button** to navigate and select the **ShowAnalyzer.exe** file for your Processor
- Make sure "**txt**" is in the "**Does Not Exist**" Field
- Click "**Save Settings**"

(See screen shots below)

Global Settings Tab



Processor 1 Tab

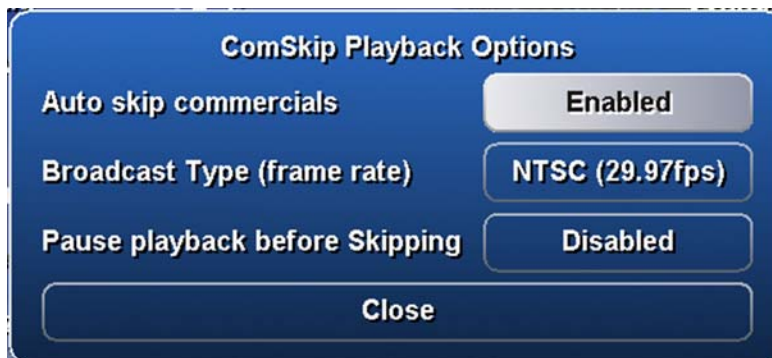


Step 7 - Install the "ComSkip v1.3" Import by copying the "comskip_playback_import.stvi" to the "SageTV/STVs/SageTV3" directory

To complete **Importing ComSkip**, you must ;

- Navigate to "**Detailed Setup > Advanced > Import SageTV Application Package (STVi)**" in SageTV
- Click the "**Select**" Button
- Select the "**comskip_playback_import.stvi**"
- Click "**Yes**" to import the ComSkip plug-in
- Navigate to "**Detailed Setup > Customize > ComSkip Playback Options**" in SageTV
- Click "**Modify**" to see the options menu ...
- Make desired **Options** changes, but don't change NTSC to PAL in the US!

(See screen shot below)



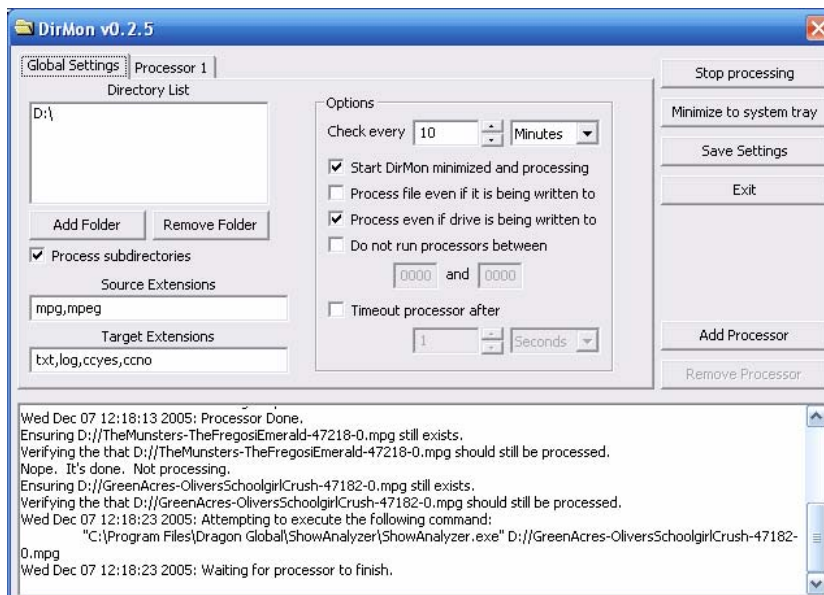
Step 8 - Start "ComSkip File Scanning" Process

In order to initiate ComSkip file scanning for the first time, you must;

- Launch "**DirMon**" from the Notification Area (System Tray)
- Click the "**Start Processing**" Button (All SageTV Recordings will be scanned for commercial locations)

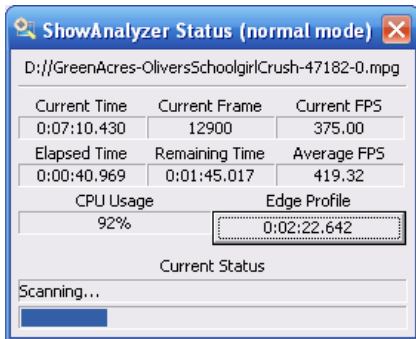
Note: The bottom pane within **DirMon** will monitor the file scanning process. When a recording has been completely scanned, you will notice a .TXT file with a name corresponding to each .MPG recording filename. These files contain all of the commercial location data / information.

(See screen shot below)



During the file scanning process the **ShowAnalyzer** icon will appear in the Notification Area (System Tray). Double Click it to see a Status on how long it can take to scan a particular recording. It may take as little as 2 minutes to scan a half hour recording!

(See screen shot below)



Step 9 - Watching SageTV Recordings after ComSkip!

- Launch "**SageTV**"
- Watch a recording that has been processed by ComSkip
- Notice the "**Dark Green**" blocks within the progress bar at the bottom of the screen!! (Those are the identified commercials)



Go ahead ... Try it!

Fast Forward right up to one of those **Dark Green** blocks and let SageTV play through ...
Just as a commercial is about to start (if you keep the progress bar from timing out) ...
You will see Sage jump right over the commercials!!

Note: You can, at any time, Fast Forward or Rewind through the commercials. They are still there ... ComSkip just identifies them and skips over them!!

STEP 10 – Disable ComSkip for a specific recording while watching

To disable ComSkip for a particular show while watching, you must;

- Right Click or view the Options menu with the Remote Control
- See "**Com. Auto Skip: Enabled**" button at the bottom of Options menu
- Click this button to Toggle Disable / Enable "Auto Skip"

Note: Once again, this is just for the recording being watched, ComSkip is still enabled by default for other recordings.

(See screen shot below)

