



All Quiet on the Western Front

Investigate WWI and *All Quiet on the Western Front* using Discovery Education *unitedstreaming* & Google Earth

Social Studies

High School Language Arts Lesson Plan

In this unit, students will explore Europe, WWI battle fields, and the impact on soldiers and home life to add context to literary book, *All Quiet on the Western Front*.

Standards:

- The student will explain the effectiveness of stylistic elements in a text that communicate an author's purpose.
- The student will explain how common and universal experiences serve as the source of literary themes that cross time and cultures.

Learning Objectives: The student will be able to,

- produce a timeline of W.W.I events tied to elements from the novel
- write a journal article to compare and contrast of the transformation of Paul Baumer from patriot to questioning the war and his nation.
- plan an itinerary and memorial trip for the *All Quiet on the Western Front* book tour with a paragraph/discussion on the purpose for visiting each site and its significance / connections to the novel.

Technology components:

- Discovery Education *unitedstreaming* account (<http://www.unitedstreaming.com>*)
- Google Earth software (free download from <http://earth.google.com>)
- Computer with LCD projector and Internet connection
- Access to the Internet for teacher and student-based research
- Presentation software such as PowerPoint
- Graphic Organizing software such as Inspiration and TimeLiner 5.0.

Introduction:

- Pose a question to the students, "What do you know about war?" Record answers using Inspiration or on the board.
- Show the video segment, *An Anti-war Book About The Great War*, from Discovery Education *unitedstreaming* video: *Great Books: All Quiet on the Western Front*, 2004.



- Tell students they will be reading *All Quiet on the Western Front* and looking at the impact of war on soldiers and on families.

Prior Knowledge:

- Using Inspiration, continue brainstorming what students know about World War I, how it began, who was involved, and the outcome.

Present New Content:

- Additional research websites: Teacher uses Google Earth to present Europe, different countries that fought in WWI and lead a discussion Treaties. Digital content from *unitedstreaming* help provide context to national alliances and treaties.
 - Suggested *unitedstreaming* content:
 - Alliances Lead to War (*Great Books: All Quiet on the Western Front*, 2000)
- Students read assigned chapters of *All Quiet on the Western Front*. Through out the discussions of the book, interject questions about how Paul Baumer evolves as a person and as a soldier.
 - Suggested *unitedstreaming* content:
 - The war at home: Total War (*Great Books: All Quiet on the Western Front*, 2004)
 - How families are dealing with the war: A Visit Home (*Great Books: All Quiet on the Western Front*, 2004)
- Students will create an ongoing journal can use Google Earth 'pushpins' to map major battles and locations of events from the book.

Independent Learning Experience:

- After completing the book, students review the Google Earth pushpins, use TimeLiner to create a timeline of major events.
- Research events and the impact of the war. Create a multimedia article comparing and contrasting the author's portrayal of Paul Baumer's pre-war expectations at home to his experiences on the battle field.
- Working in groups, students will plan an itinerary and memorial trip for the *All Quiet on the Western Front* book tour with a paragraph/discussion on the purpose for visiting each site and its significance / connections to the novel.

Additional research websites:

- The Eye Witness to History site is filled with supporting information, dates, and locations: <http://www.eyewitnesstohistory.com/w1frm.htm>
- The Great War Timeline from PBS allows the students to research important battles and events prior to and during World War I: <http://www.pbs.org/greatwar/timeline>





Cross-Curricular Lesson Extension:

- Provide students with a list of historical sites they can choose to visit and have them research/present information about the place.
- Use Google Earth's measure tool to include measurements of the size of the battle field, distances between enemy lines, or total area captured by either side during the war.

Feedback:

- Teacher circulates around the room providing ongoing feedback to small groups.
- Students should submit a rough draft of their tour with key ideas behind each location half way through the project. Teacher will provide comments and guidance on next steps for each pair or group.

Assessment:

- Use a scoring rubric, provided to the students in advance, to evaluate each tour itinerary, rational and multimedia presentation.

Transfer:

- The United States is currently in a military conflict in Iraq. How is our current level of nationalism and support for the war in Iraq? How has it changes and what forces lead to those changes in attitudes?

Citations:

Great Books: All Quiet on the Western Front. Discovery Channel School (2000).

Great Books: All Quiet on the Western Front . Discovery Channel School (2004).





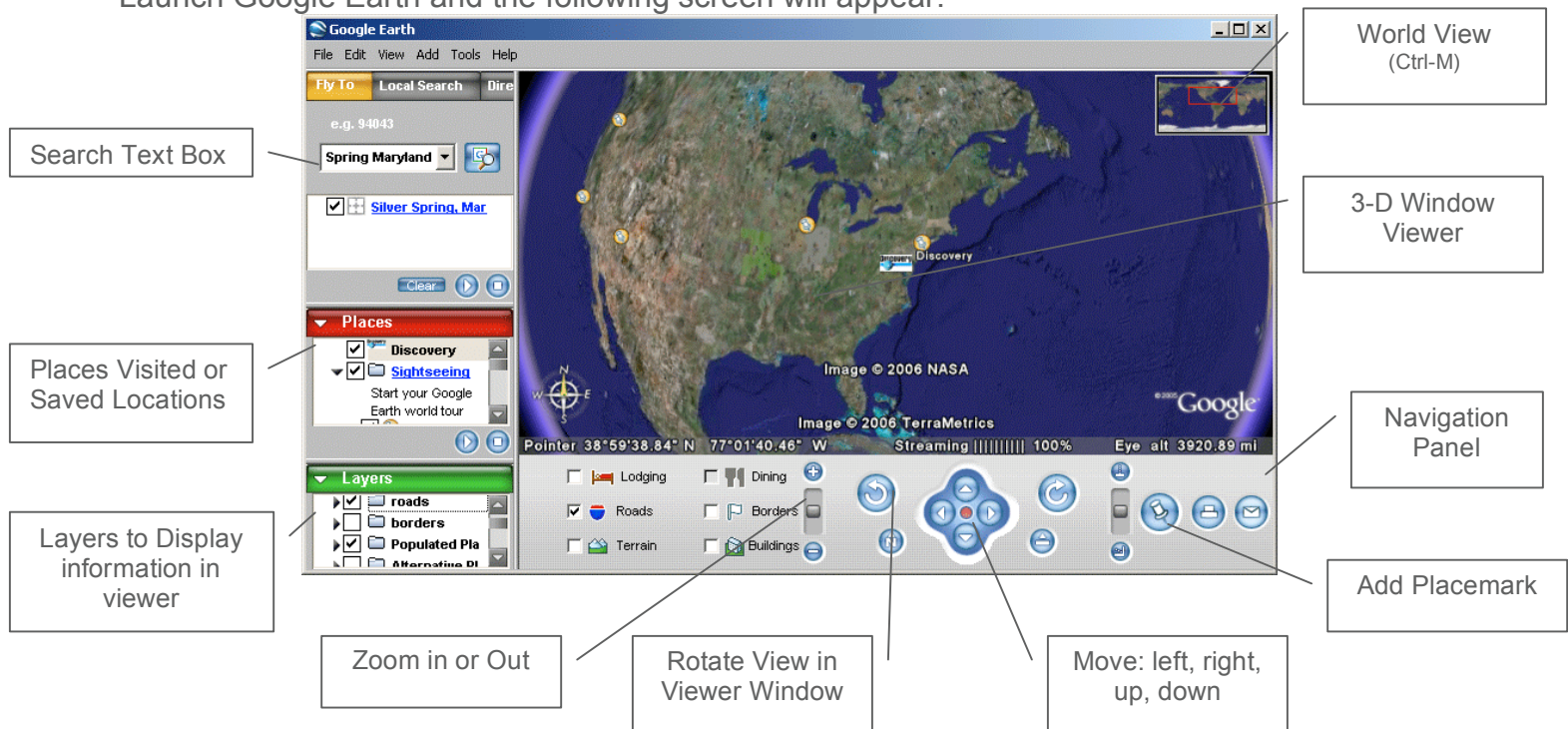
Discovery Education *unitedstreaming*

Google Earth

Google Earth allows educators to add elements of satellite photography, world geography, locations, and images to their instructional lessons.

Google Earth Viewer

Launch Google Earth and the following screen will appear:



Fly To a Location

To have Google Earth 'fly-by' a location, type the city, state, or country into the Search Text Box. Google Earth will locate the position and the viewer window will 'fly' to the location.

- Click and hold in the viewer window to move around the location
- Use Google Earth's Zoom, Rotate, and Move tools from the menu bar to navigate and explore the location

World View


Press Ctrl-M to open the world view map in the top right hand corner of the Viewer Window.

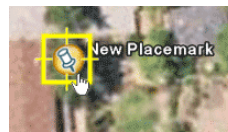
- Double-click on any location in the World Viewer to jump to that location
- Use Google Earth's Zoom, Rotate, and Move tools from the menu bar to navigate and explore the location





Making a Placemark:

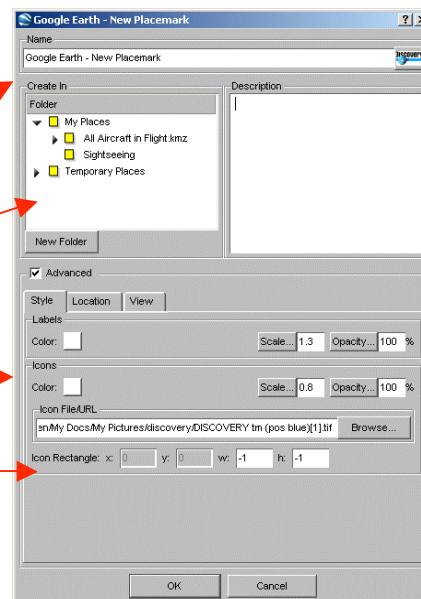
1. Position the viewer in the location where you want to add a Placemark.
2. Click on the 'Add Placemark' pushpin icon  in the navigation panel.
3. The New Placemark dialog appears and a New Placemark icon is centered in the viewer inside a flashing yellow square.



- Position the Placemark by clicking and holding and moving to the exact location you want it.

- In the New Placemark dialogue box, edit the following properties:


- Name for the Placemark
- Destination folder, existing folder or create a new one
- Color of Label or Placemark icon
- Image to represent the Placemark



4. Select a folder to hold the Placemark or create a new one.
5. Click the OK button to apply the information you entered.
6. Once created, editing can be completed by 'right' clicking on the Placemark icon and selecting 'edit...'



Inserting a *unitedstreaming* video segment inside a Placemark:

1. Log into *unitedstreaming* and search or browse the video segment.
2. Right click on the download icon  and select 'copy shortcut'
3. Open up the Placemark by right-clicking on it and click EDIT
4. Paste Shortcut Location inside the Description text box.
Anything that is put inside this box will appear when the Placemark is opened.
5. When visiting the Placemark, double click on the image/icon to open and view images or video segments.

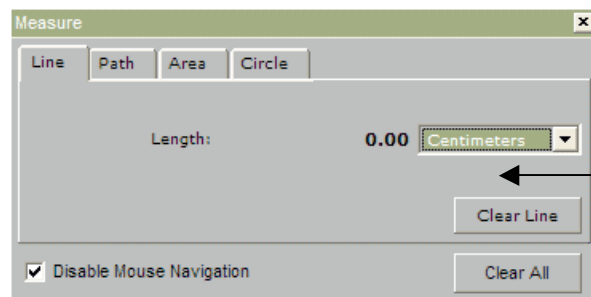
Inserting Funk and Wagnall articles inside a Placemark:

You can copy and paste any of the Funk and Wagnall text found inside *unitedstreaming* that accompanies many of the videos into the Description text box.

Measuring

Use the Measure window in the Tools menu to measure length, area, and circumference as follows:

1. Position the imagery you want to measure within the 3D viewer and make sure you are viewing the earth from top-down (type U) and with terrain turned off for best accuracy.
2. From the Tools menu, select Measure. The Measure dialog box appears.



Consider moving the dialog box to a region of your screen that doesn't obstruct the 3D viewer.

3. Choose the type of shape you want to use to measure:
 - Line allows you to measure from point to point
 - Path allows you to create multiple stops on a journey or trip to measure the total distance



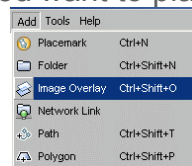
4. Choose the unit of measure for length; perimeter, area, radius, or circumference, as applicable.
5. Click in the 3D viewer to set the beginning point for your shape:
 - For a line: click on the beginning point and the ending point, the distance will appear in the Measure dialogue box.
 - For a Path: click once for the beginning point, indicated by a red dot, click along points of your path and a yellow line connects each point as you move the mouse. Each additional click adds a new line to the path. The total units for the shape are defined in the Measure dialog.
6. Click 'Clear' to reset the measure tool. To close, click on the 'x' on the top right corner of the dialogue box.

Creating an Image Overlay

An image overlay is a picture that you can add over the Google Earth satellite view.

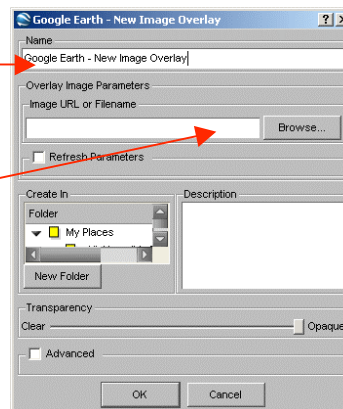
1. Position the viewer in the location where you want to place the overlay image file.

2. Select Image Overlay from the Add menu.



3. The New Image Overlay dialog appears. Edit the following properties:

- Provide a descriptive name in the Name field.
- Browse to locate the icon or image on your computer
- At this point, the image appears in the 3D viewer, with green anchor points. Click and drag these points to position the image.



4. Position the image in the viewer to your preferences and click OK to complete the creation.